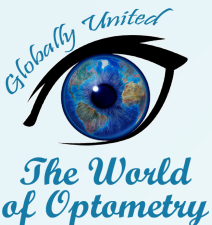
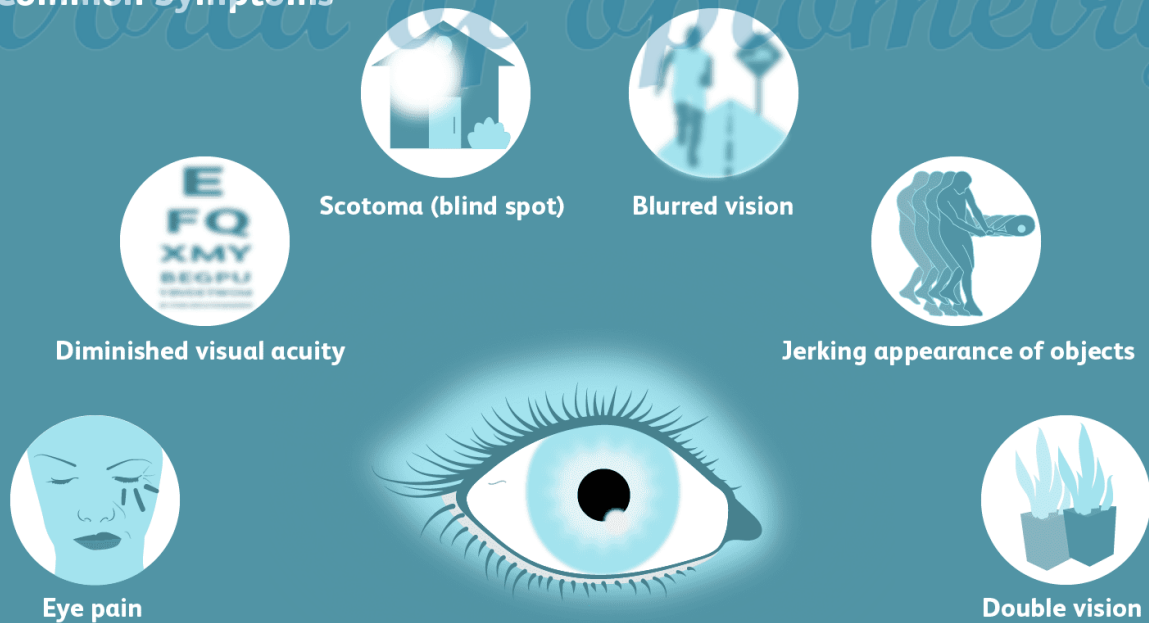


TWOP Discussion

MULTIPLE SCLEROSIS AND THE EYE

Multiple Sclerosis Vision Problems

Common Symptoms



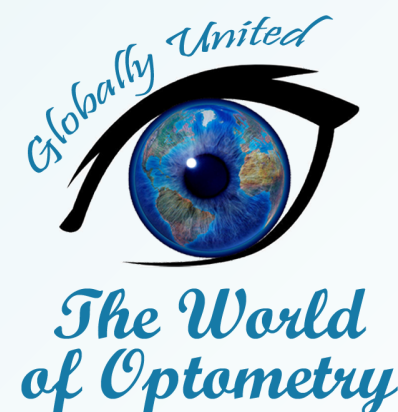
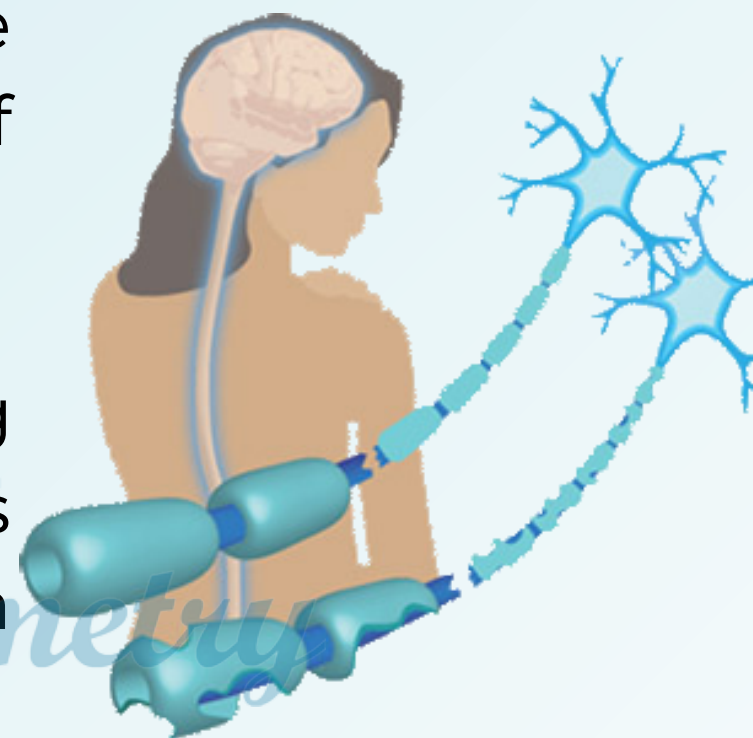
#TwopDiscussion

INTRODUCTION

Multiple Sclerosis, a neurodegenerative disease, affects the **CNS** which results in demyelination of axons.

It is characterized by demyelinating lesions of axons in the CNS, causes communication problems between CNS and rest of the body.

Multiple Sclerosis affects an estimated 2.1 million people worldwide.

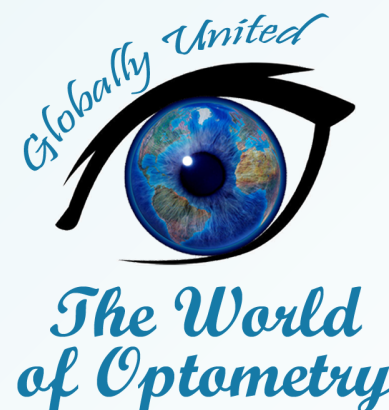


#TwopDiscussion

SYMPTOMS

The **Symptoms** vary depending on the location of the lesion which includes changes in:

- Autonomic functions
- Motor functions
- Sensory functions



#TwopDiscussion

OCULAR MANIFESTATION

Multiple Sclerosis often presents with **ocular manifestation secondary to inflammatory demyelination** of visual pathway. Symptoms include:

- Blur vision
- Double vision
- Loss of vision (Partial or Complete)

Majority of patients experience at least one episode of **ocular involvement** in the course of their disease.

Age of onset: **15-45 years**

Females are more commonly affected than males with a ratio of 2 to 1.



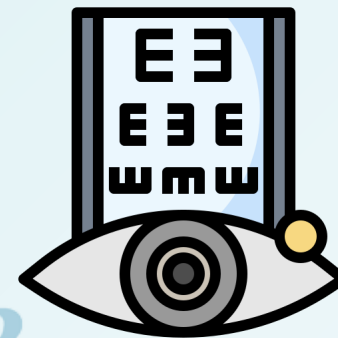
The World of Optometry

#TwopDiscussion

EXAMINATION

Physical evaluation includes:

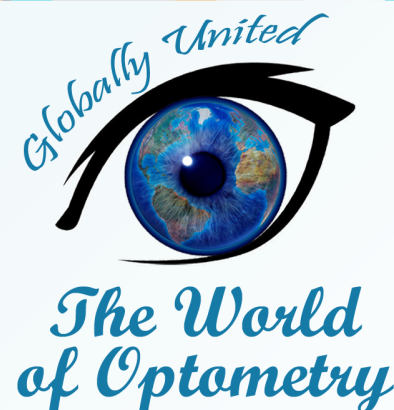
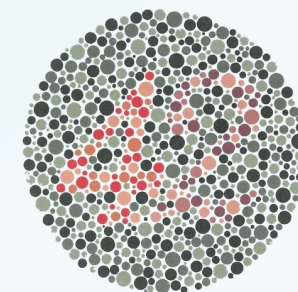
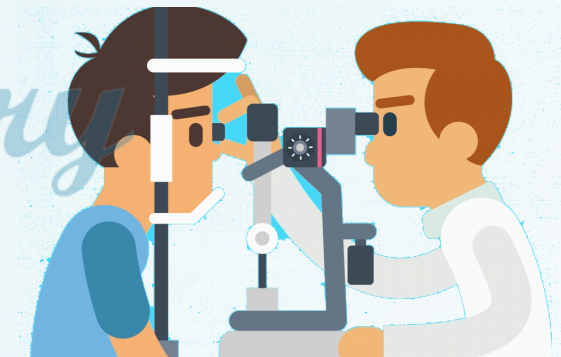
- Cranial nerve evaluation
- Tendon reflexes
- Strength
- Gait
- Coordination



Ophthalmic examination includes:

- EOM movements
- Reactions
- Inflammation
- Slit lamp examination of the optic disc
- Acuity
- Colour vision
- Contrast sensitivity

The World of Optometry



@theworldofoptometry



TheWorldofOptometry



TheWorldofOptometry

#TwopDiscussion

MULTIPLE SCLEROSIS

- **Optic neuritis** treatment trial showed that clinically definite Multiple Sclerosis development in 50% of ONTT patients in 15 years.



- **Visual symptoms like decreased vision**, visual field defects and colour vision defects recover within weeks to months.



*The World
of Optometry*



@theworldofoptometry



TheWorldofOptometry

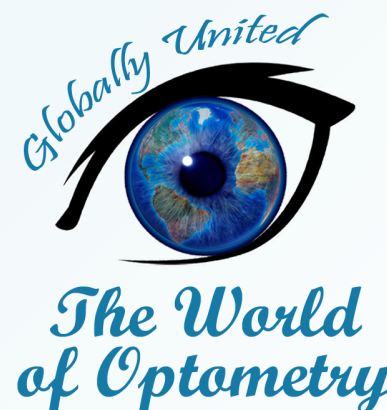
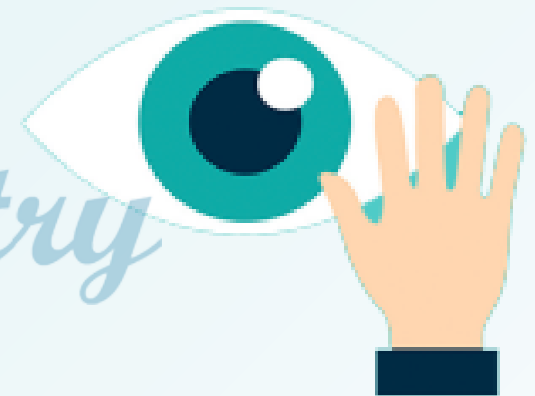


TheWorldofOptometry

#TwopDiscussion

MULTIPLE SCLEROSIS

- A majority of patients achieve **20/20 vision one year after** an acute episode while 8 % of patients retain a Visual acuity worse than 20/40. However recurrent episodes are associated with less favourable prognosis.



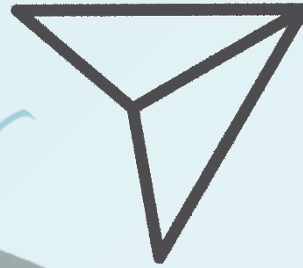
#TwopDiscussion



Wow, what cool content



Leave your comment



Share with friends



Save, to consult in the future

The World of optometry

