

TWOP

World Sight Month

2020

Globally United
#HopeInSight



The World of Optometry
**#3 Leading Cause of
Preventable Blindness**

**AGE RELATED MACULAR
DEGENERATION**

#TwopWSM

Definition, Types & Prevalence

Age-related macular degeneration (ARMD) is a degenerative eye disease that causes damage to the macula, ARMD can impair central vision.

Types of ARMD:

Dry ARMD & Wet ARMD

Prevalences: Approximately 11 million individuals are affected with AMD in the United States (U.S.) alone, with a global prevalence of 170 million. AMD is thereby the leading cause of visual disability in the industrialized world and the third leading cause globally.

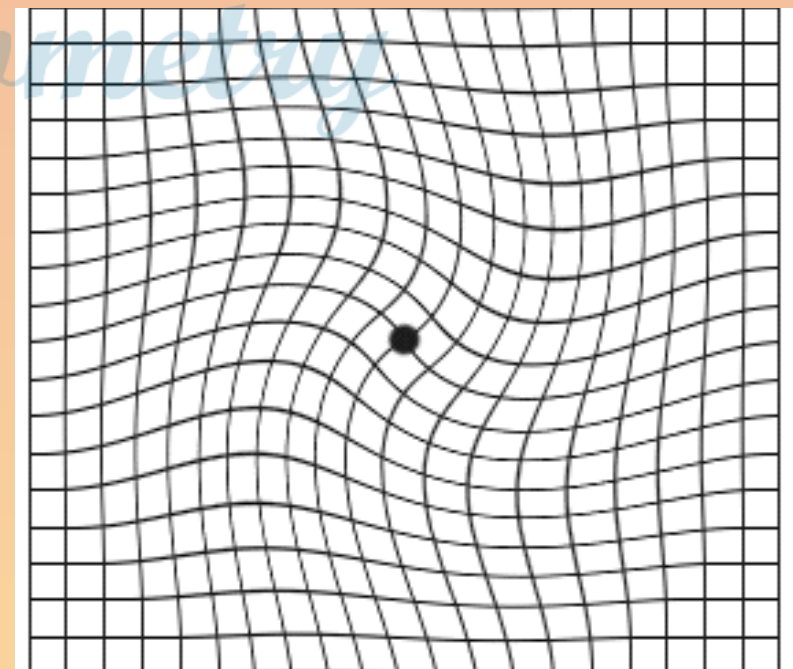


#TwopWSM

Signs & Symptoms

The **signs and symptoms** of ARMD includes:

- Blurred or “fuzzy” vision.
- Straight lines, such as sentences on a page, appearing wavy or distorted.
- Blurry areas on a printed page.
- Difficulty reading or seeing details in low light levels.
- Extra sensitivity to glare.
- Clouded, blurred or dim vision.



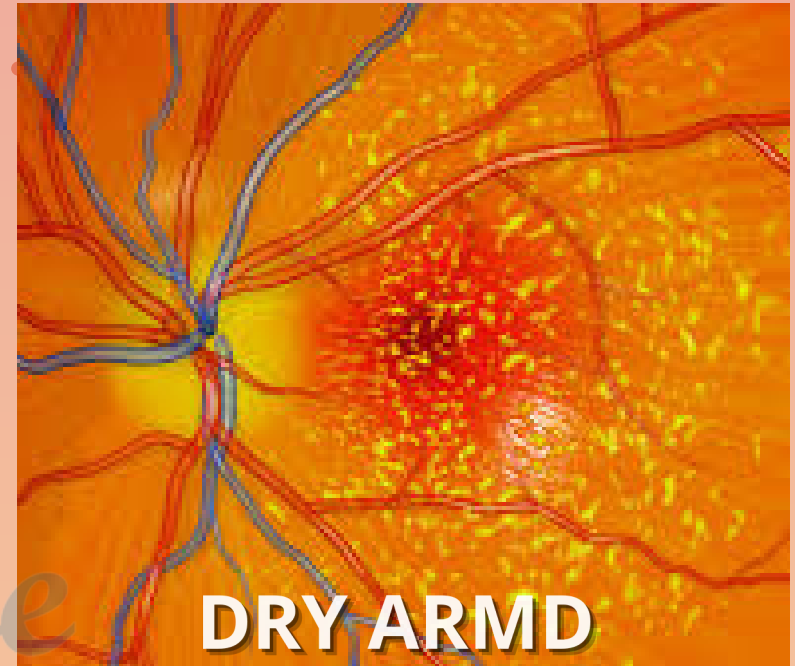
#TwopWSM

Association of Systemic Pathologies

Systemic Association:

- Hypertension
- Cardiovascular disease
- Cerebrovascular disease
- Chronic kidney disease and neurodegenerative disorders.

ARMD can be diagnosed in your routine eye exam.

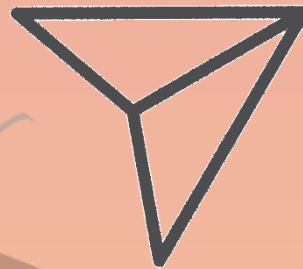




Wow, what a cool content



Leave your comments



Share with friends



Save, to consult in the future

The World of optometry



The World of Optometry



@theworldofoptometry



TheWorldofOptometry



TheWorldofOptometry