

“

TWOP TIPS

*brought to you by
The World of Optometry*



IDENTIFYING ASTEROID HYALOSIS AND SYNCHYSIS SCINTILLANS



#TwopTips



@theworldofoptometry



TheWorldofOptometry



TheWorldofOptometry


INTRODUCTION

Identifying Asteroid Hyalosis and Synchrony Scintillans

- At some point during a slit lamp examination, clinicians can encounter deposit accumulation in the vitreous. The confusion to distinguish between asteroid hyalosis and synchrony scintillans is common.



ASTEROID HYALOSIS



SYNCHYSIS SCINTILLANS

TIPS

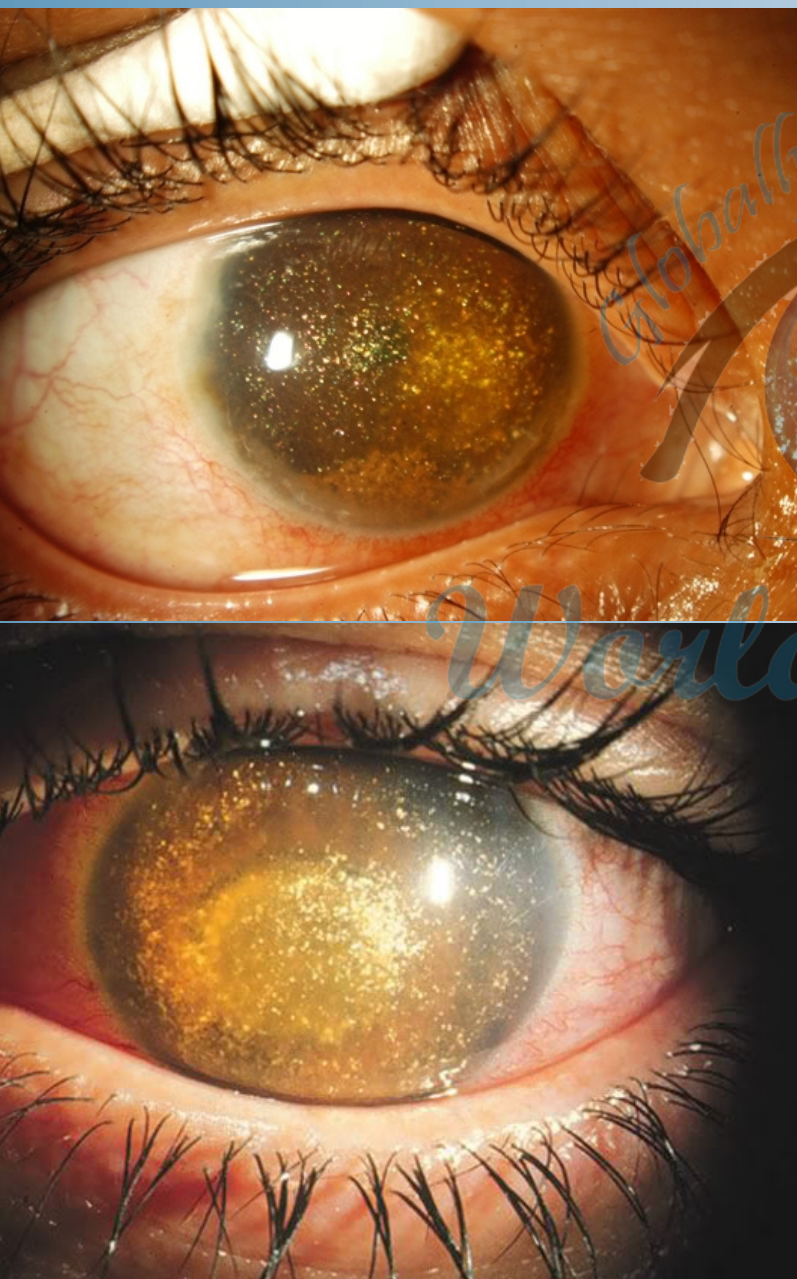


Asteroid Hyalosis

- No visual impairment
- Unilateral
- Moves with vitreous body and returns to its original position
- Not associated with any other pathology (an exception for diabetes mellitus in certain cases)
- Calcium soap in nature



TIPS



Synchysis Scintillans

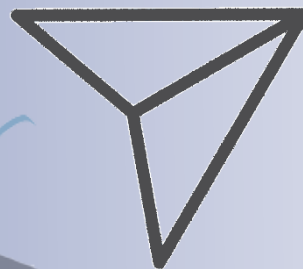
- Varying visual impairment depending on underlying cause
- Bilateral
- Found in liquefied vitreous
- Moves freely and falls to vitreous floor due to gravity
- Pathology usually secondary to other ocular diseases and tumours
- Cholesterol crystal in nature



Wow, what a cool content



Leave your comments

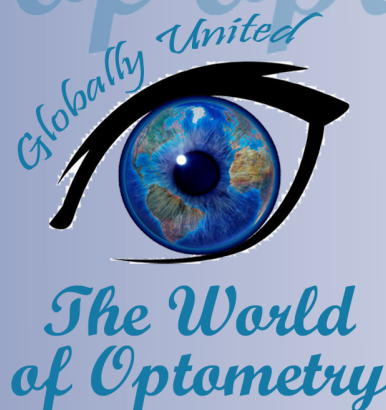


Share with friends



Save, to consult in the future

The World of optometry



#TwopTips



@theworldofoptometry



TheWorldofOptometry



TheWorldofOptometry