

TWOP

Glaucoma

Awareness Month

#GAM2021



The World of optometry

**The Prevalence and
Impacts of Glaucoma**

SOURCE: AMERICAN OPTOMETRIC ASSOCIATION

GLAUCOMA

Prevalence

For populations aged 40-80 years, the global **prevalence** of glaucoma is 3.54 percent (95 percent CrI, 2.09-5.82).



- In 2013, it was reported that the number of people (aged 40-80 years) with glaucoma worldwide was 64.3 million, growing to 76.0 million in 2020 and 111.8 million in 2040.

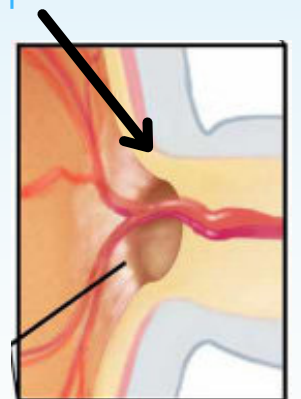
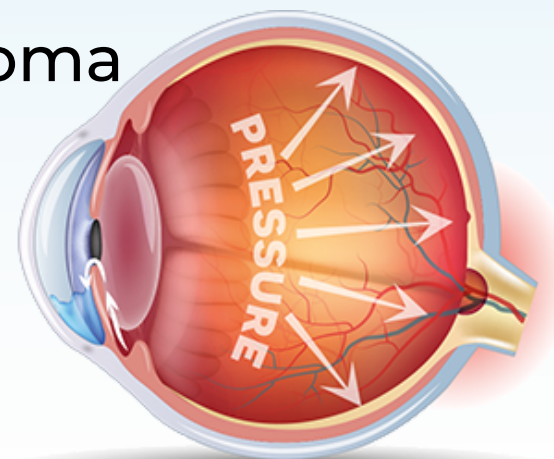


Types

- **Types:**
 - Primary Open Angle of Glaucoma (POAG)
 - Primary Angle Closure Glaucoma (PACG)
- **Other types:** Congenital Glaucoma, Secondary Glaucoma, Pigmentary Glaucoma, Pseudoexfoliative Glaucoma, Traumatic Glaucoma, Neovascular Glaucoma, Uveitic Glaucoma, Phacomorphic Glaucoma

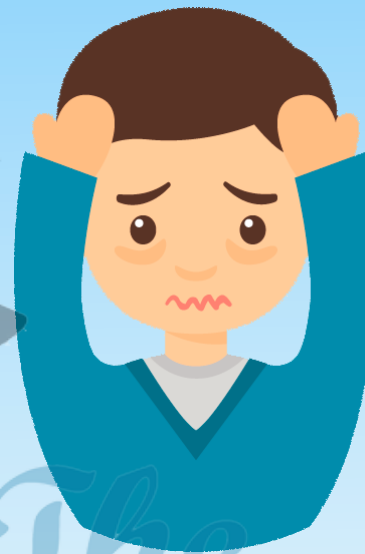


#TWOP
changes in optic nerve



Signs & Symptoms

- Severe headache
- Eye pain
- Nausea and Vomiting
- Blurred vision
- Halos around lights
- Eye redness

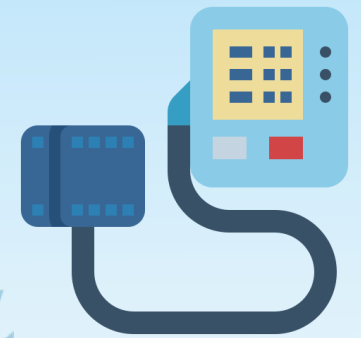
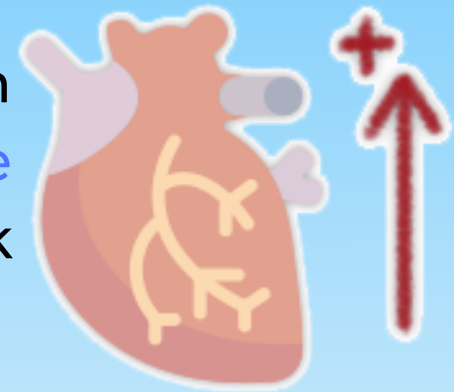


Certain type of Glaucoma has no signs and symptoms at early stage.



Risk Factors

- To be associated with a few systemic diseases such as **Systemic hypertension**, **vasospasm**, and **acute hypotension** have been proposed as potential risk factors for glaucoma in clinic-based studies.
- Several studies have reported associations between **low diastolic pressure**, **lower ocular perfusion pressure (OPP)** and higher prevalence and/or incidence of glaucoma.
- **Congenital cataracts** might be inherited or secondary to an intrauterine insult, and cataracts associated with a systemic or ophthalmic genetic disease may not occur until the second or third decade of life.
- The timing or intralenticular location of an inherited cataract can provide clues regarding its genetic origin.



Risk Factors and Complications

- Typically, early-onset forms of **glaucoma** affecting children and young adults are inherited as autosomal dominant or recessive Mendelian characteristics, while glaucoma affecting older adults has a diverse heritage.
- Early onset forms of **glaucoma** are uncommon, whereas forms of adult onset are more prevalent.
- Complications include: Chronic corneal edema (loss of transparency), Loss of central or side (peripheral) vision and Loss of vision or changes in vision.

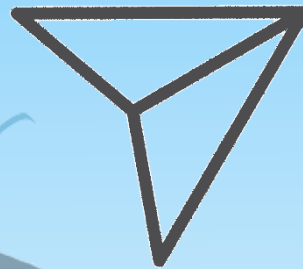




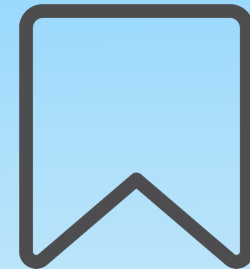
Wow, what a cool content



Leave your comments



Share with friends



Save, to consult in the future

The World of optometry



The World of Optometry



@theworldofoptometry



TheWorldofOptometry



TheWorldofOptometry