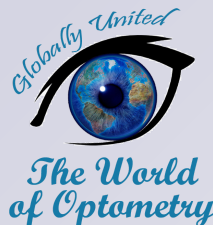


TWOP Discussion

MULTIFOCAL CONTACT LENS



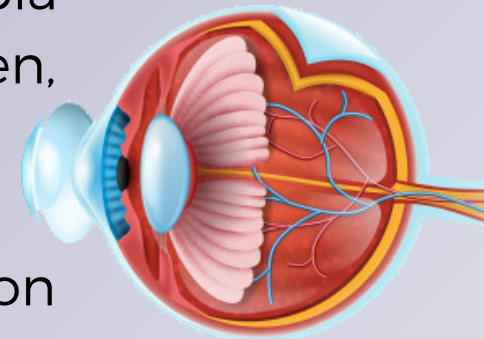
Globally United
The World of Optometry



#TwopDiscussion

INTRODUCTION

- Multifocal contact lenses can help if you develop presbyopia along with more than one other refractive error most often, myopia and astigmatism together.
- There are a few types of multifocal contact lenses based on where the powers are located on the lens itself, which determines how your pupil adjusts to see at different distances.
- If there was a refractive error, may be present myopia (nearsightedness), astigmatism, hyperopia (farsightedness), or presbyopia (age-related farsightedness).
- Many people have more than one refractive error. For example, myopia and astigmatism together are very common.
- There are several methods for managing refractive errors, and soft contact lenses are among the most common devices.



*The World
of Optometry*

#TwopDiscussion

INTRODUCTION

- It is common for people in middle age or older adulthood to have myopia, presbyopia, and astigmatism. Often, this means you end up wearing a set of contacts to correct your existing refractive error and then wearing reading glasses when you need to for up-close work.
- The Optometrist may recommend **bifocals or multifocal lens glasses** for times when you need to consistently correct all refractive errors. However, you may not want to wear glasses again, and instead, you want to stick with contact lenses.
- **Multifocal contact lenses** allow you to see near, medium, and far distances with better visual acuity and less juggling of other devices, like wearing contacts and also wearing reading glasses. They are not for everyone, but they can be very helpful for some people who have more than one refractive error.



The World
of Optometry

#TwopDiscussion

HOW DO MULTIFOCAL CONTACT LENSES WORK?

- Any type of contact lens that has two or more “powers”, or prescriptions, is a **multifocal contact lens**.
- **Bifocal lenses** are the most familiar to most people, but there are other forms of multifocal lenses, including trifocals and progressive lenses.
- Wearing multifocal lenses allow you to alternate between multiple activities. For example, you can read messages on your phone while you stop and then read road signs while you drive. There are different sections in **multifocal lenses for different prescription powers**.
- It was well known that bifocal lenses in glasses have a top section for your dominant refractive error, like myopia, and a bottom section for presbyopia treatment. These are clearly divided sections. Bifocal contact lenses sometimes work the same way.

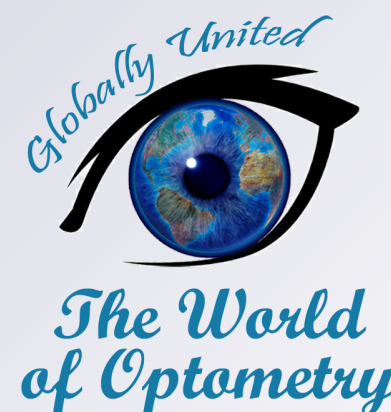
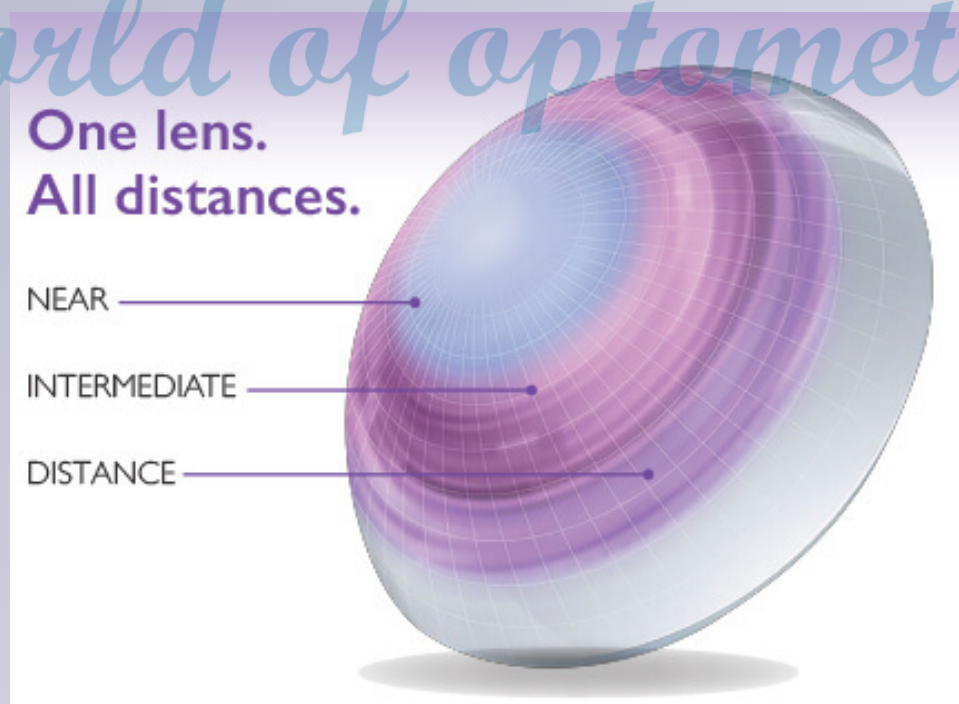


The World
of Optometry

#TwoopDiscussion

MULTIFOCAL CONTACT LENSES CONTINUED

- More people wanted a smoother transition between these visual areas, especially if they have more than two powers in their glasses or contact lenses. This leads to new types of multifocal lenses for glasses and contacts. Some of these include:
 - **Concentric:** which have rings of vision correction rather than sections from top to bottom. These can feel better for contact lens wearers.

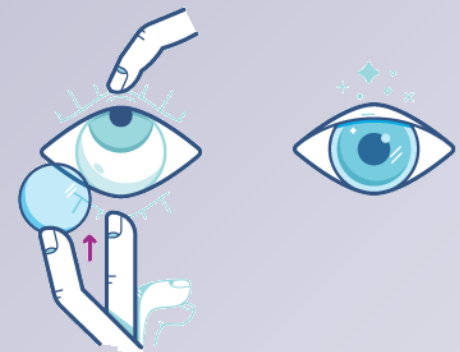


DRAG TO THE SIDE
DRAG TO THE SIDE

#TwoPDiscussion

MULTIFOCAL CONTACT LENSES CONTINUED

- **Aspheric:** which transition seamlessly from one area to another in your vision.
- **Segmented or translating:** which look like traditional bifocal or trifocal lenses in glasses, featuring clearly divided areas for focus.



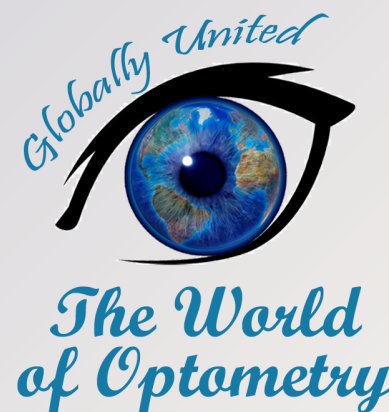
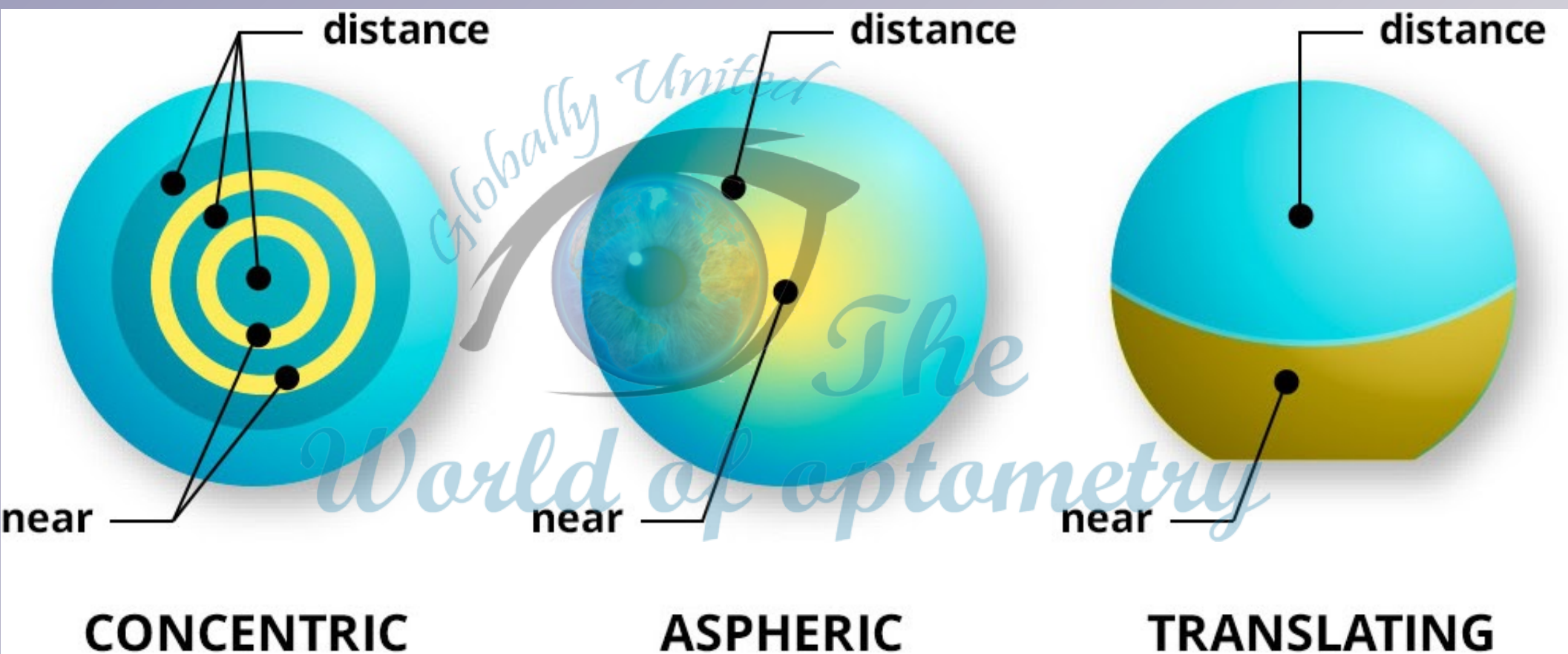
*The World
of Optometry*

You can get daily disposable lenses, month-long lenses, and some other in-between options.

DRAG TO THE SIDE
DRAG TO THE SIDE

#TwopDiscussion

MULTIFOCAL CONTACT LENSES



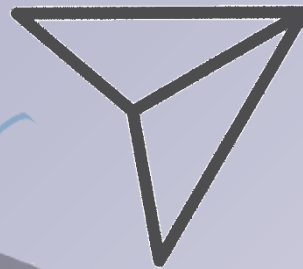
#TwopDiscussion



Wow, what cool content



Leave your comment



Share with friends



Save, to consult in the future

The World of optometry

