

“

# TWOP TIPS

*brought to you by  
The World of Optometry*



# HOW TO TACKLE A PATIENT BASED ON COMPLAIN PART 2



#TwopTips



@theworldofoptometry



TheWorldofOptometry



TheWorldofOptometry

## TIPS



### 1. FLOATERS & FLASHES

- SUDDEN INCREASING IN A AMOUNT:  
POSTERIOR SEGMENT

- Retinal Pathologies

E.g., Retinal detachment, PVD, DR,  
Retinal Tear

- PROGRESSIVE INCREASE IN A  
AMOUNT : Aging

E.g., PVD, DR

**Test to performs:** VA

Refraction (if necessary), OCT, Dilated  
Fundus Examination.



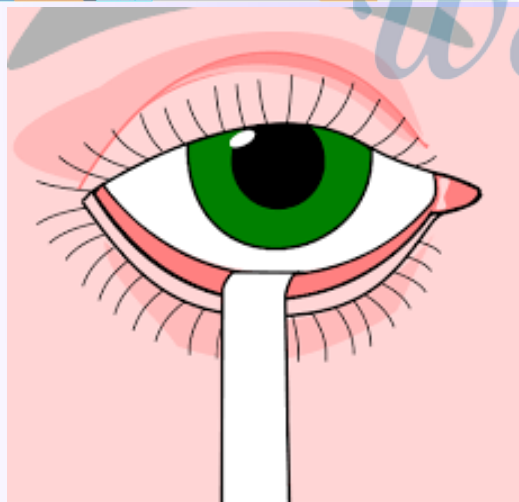
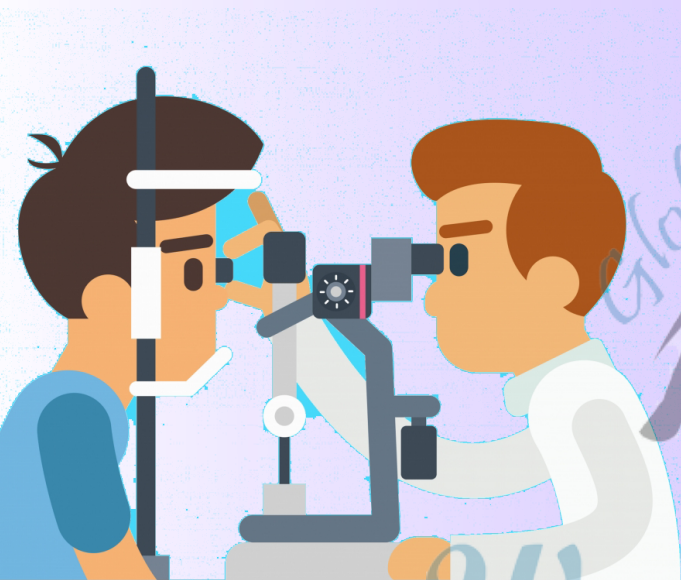
## TIPS

### 2. FOREIGN BODY SENSATION

- WITH GRITTIENESS: ANTERIOR SEGMENT
  - Corneal pathologies
  - Conjunctival pathologies
  - Contact lens related disorders

E.g., dry eyes, concretions, papillae, follicles, foreign body embedded

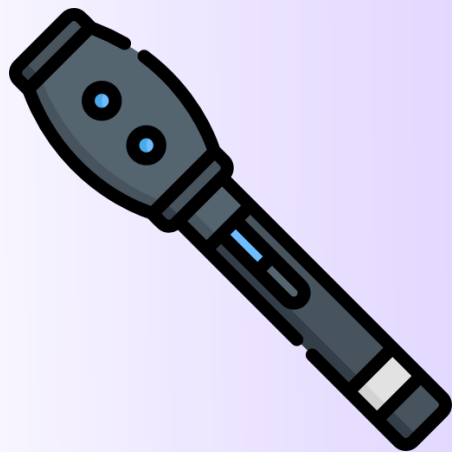
**Test to performs:** VA, Refraction (if necessary), NIBUT, Slit Lamp examination, TBUT, SHIRMERS TEST.



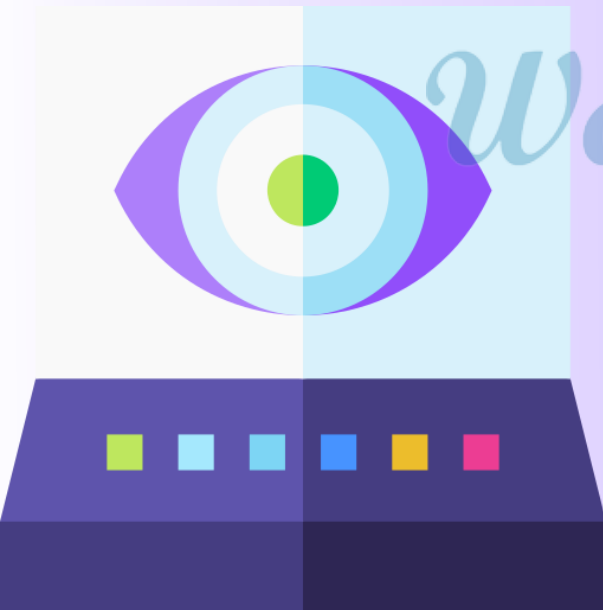


## TIPS

### 3. GLARE



- **Discomfort Glare:** Due to direct or reflected glare
- **Disabled Glare:** Anterior segment & posterior segment
  - Refractive errors
  - Corneal pathologies
  - Macular disorders



E.g., Astigmatism, dry eyes, cataract, macular degeneration

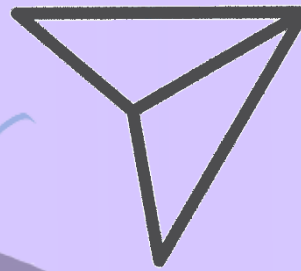
**Test to performs:** VA, Refraction, NIBUT, TBUT, SHIRMERS, Cataract Assessment, Contrast Sensitivity, OCT.



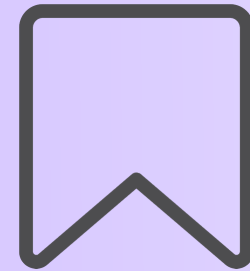
Wow, what a cool content



Leave your comments



Share with friends



Save, to consult in the future

# The World of optometry



The World of Optometry

#TwopTips



@theworldofoptometry



TheWorldofOptometry



TheWorldofOptometry